

Isolert Kobberlisse F240-565 IBSB ADVANCED 240-565 (558642ADV)



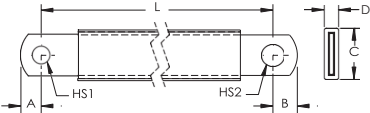
IBSB is the ideal ready-to-install flexible wire replacement solution that is specifically designed for connections to all molded case circuit breakers, including the most compact breakers on the market. It connects to the front access terminals of the breakers without any additional accessories, such as angular connectors, spreaders, ring terminal connectors or extenders. IBSB is available in cross section of 25 to 240 mm² (49.34 to 273.65 kcmil), lengths from 165 to 1,130 mm.

Manufactured in an ISO 9001 certified proprietary automated facility, IBSB is formed by weaving high-quality electrolytic copper wire to form a durable low voltage connector with maximum flexibility that allows for more compact power connections to circuit breakers. The IBSB allows users to reduce the total size and weight of the installation, improving both design flexibility and assembly aesthetics.

The IBSB features integral pre-punched palms that are ready to connect out of the box. There are no lugs to purchase or install, making connections simpler and faster and eliminating faulty connections due to vibration or fatigue. The insulation is a high-resistance, low smoke, halogen free thermoplastic elastomer (TPE)

IBSB is compatible with all major brand molded case circuit breakers. Contact your ERIFLEX representative to determine the correct size for your application.

- Suitable for all main molded case circuit breakers
- Resistant to vibration, improving reliability and performance
- Improves assembly flexibility and aesthetics
- Quick and easy installation
- No additional cutting, stripping, crimping and punching needed
- Integral palm without lugs or terminals reduces material and assembly weight
- Small wire diameter provides maximum flexibility
- RoHS compliant



Part Number	IBSB ADV 240-565
Article Number	558642 ADV
Typical Application Current Rating	630 A
Finish	Bare
Material	Copper Thermoplastic Elastomer
Dielectric Strength	20 kV/mm
Flammability Rating	UL® 94V-0
Max Working Voltage, IEC/UL 758	1,000 VAC

Part Number	IBSB ADV 240-565
	1,500 VDC
Max Working Voltage, UL 67	600 VAC/DC
Working Temperature	115 °C Max
Operating Temperature	-50 to 115 °C
Wire Diameter	0.15 mm
Complies With	IEC@ 60439.1 IEC@ 61439.1 IEC@ 61439.1 Class II
Cross Section	240 mm ²
Conductor Width	32 mm
Conductor Thickness	9.2 mm
Length (L)	565 mm
A	12 mm
B	14 mm
C	39 mm
D	18.5 mm
Hole Size 1 (HS1)	10.5 mm
Hole Size 2 (HS2)	12.5 mm
Unit Weight	1,65 kg
Certifications	DNV-GL Type Approval ABS 13-HS1070074-PDA Bureau Veritas 41939 BV CE CSA 90005 cURus EAC0234251 (Russian Federation) IEC61439-1 Class II IBSB-IBSB-IBSBR IEC61439-1 IBS-IBSB-IBSBR RoHS
Standard Packaging Quantity	2 pc
UPC	
EAN-13	7090041500532

Maximum Ampacity Ratings									
Cross Section (mm ² /kcmil)	ΔT 30° C (A)	ΔT 40° C (A)	ΔT 45° C (A)	ΔT 50° C (A)	ΔT 55° C (A)	ΔT 60° C (A)	ΔT 70° C (A)	2 Bar Current Coefficient	3 Bar Current Coefficient
25/49.34	116	134	142	150	157	164	177	1.6	2
50/98.68	213	246	260	274	288	301	325	1.6	2
70/138.15	226	261	277	291	306	319	345	1.6	2
100/197.35	298	344	365	385	404	422	456	1.6	2
120/236.82	363	419	444	468	491	513	554	1.6	2
185/365.1	416	480	509	537	563	588	635	1.6	2
240/473.65	556	642	681	718	753	786	849	1.6	2

Circuit Breaker Compatibility							
Circuit Breaker Current Rating	125/160 A	250 A	300 A	350 A	400 A	500 A	630 A
Part Number	IBS ADV 25x	IBSB ADV50x	IBSB ADV70x	IBSB ADV100x	IBSB ADV120x	IBSB ADV185x	IBSB ADV 240x
Schneider Electric® Compact® (IEC)	NSA NG 125	NSX 250	NSX 400	NSX 400	NSX 400	NSX 630	NSX 630
Square D® PowerPact® (UL)	H-Frame	J-Frame	L-Frame	L-Frame	L-Frame	-	-
ABB® Tmax® (IEC)	T1 T2 XT1	T3 XT3 XT4	T4	T4	T5	T5	T5

Circuit Breaker Compatibility							
Circuit Breaker Current Rating	125/160 A	250 A	300 A	350 A	400 A	500 A	630 A
Part Number	IBSADV25x	IBSB ADV 50x	IBSB ADV 70x	IBSB ADV100x	IBSB ADV 120x	IBSBADV 185x	IBSBADV 240x
	XT2						
ABB® Tmax® (UL)	T1 T2	T4	T5	T5	T5	-	-
GE® Record Plus® (IEC/UL)	FD 160	FE 250	FG 400	FG 400	FG 400	FG 630	FG 630
Siemens® Sentron® (IEC/UL)	VL160X 3VL1 VL160 3VL2	VL250 3VL3	VL400 3VL4	VL400 3VL4	VL400 3VL4	-	-
Moeller® xEnergy® (IEC)	NZM1	NZM2	NZM3	NZM3	NZM3	NZM3	NZM3
Cutler Hammer® Series G (UL)	EG Frame	JG Frame	LG Frame	LG Frame	LG Frame	LG Frame	LG Frame
Legrand® (IEC)	DPX 160 DPX3 160	DPX 250 DPX3 250	DPX 630	DPX 630	DPX 630	DPX 630	DPX 630
Hager® (IEC)	h3 160	h3 250	h3 630	h3 630	-	-	-

ΔT = Temperature of conductors – Internal temperature of panel.

This table indicates the temperature rise produced by chosen current in the given section. This calculation does not take into account the heat dissipation from the switch gear.

ABB is a registered trademark of ABB Asea Brown Boveri Ltd. ABS is a registered certification mark of American Bureau of Shipping. CSA, CSA-US and C-CSA-US are registered trademarks of Canadian Standards Association. GE and Record Plus are registered trademarks of General Electric Company. Hager is a registered trademark of the Hager Group. IEC is a registered trademark of the International Electrotechnical Commission. Legrand is a registered trademark of Legrand North America, Inc. Moeller, xEnergy, and Cutler Hammer are registered trademarks of Eaton Corporation. Schneider Electric and Compact are registered trademarks of Schneider Electric SA. Siemens and Sentron are registered trademarks of Siemens Aktiengesellschaft. Square D and PowerPact are registered trademarks of SNA Holdings Inc. Tmax is a registered trademark of ABB SACE SpA. UL, UR, cUL, cUR, cULus and cURus are registered certification marks of UL LLC.