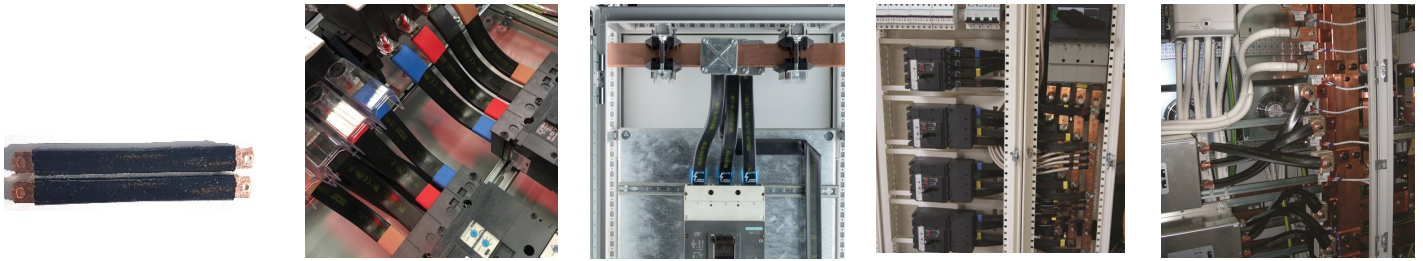


IBSB SCS Insulated Braided Conductor, Halogen Free - IBSB240-830 SCS (558545MTO)

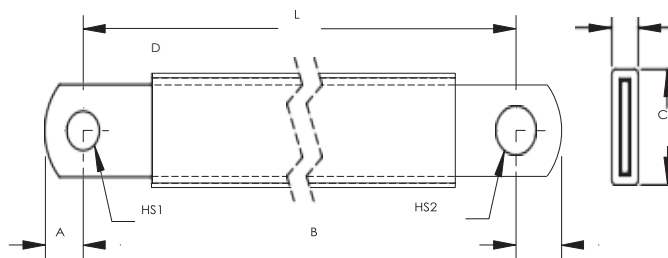


IBSB SCS Insulated Braided Conductor, Halogen Free is the ideal ready-to-install flexible wire replacement solution that is specifically designed for connections to all molded case circuit breakers, including the most compact breakers on the market. It connects to the front access terminals of the breakers without any additional accessories, such as angular connectors, spreaders, ring terminal connectors or extenders. IBSB SCS is available in cross section 240 mm^2 (273.65 kcmil), lengths from 230 to 1,030 mm (9.06" to 40.55"), 700 A bare copper.

Manufactured in an ISO 9001 certified automated facility, IBSB SCS is formed by weaving high-quality electrolytic copper wire to form a durable low voltage connector with maximum flexibility which allows for more compact power connections to circuit breakers. The IBSB SCS allows users to reduce the total size and weight of the installation, improving both design flexibility and assembly aesthetics.

The unique manufacturing process of integral pre-punched palms make IBSB SCS ready to connect out of the box. There are no lugs to purchase or install, making connections simpler and faster and eliminates faulty connections due to vibration or fatigue.

- Suitable for all main molded case circuit breakers
- Resistant to vibration, improving reliability and performance
- Insulated by high-resistance, halogen free, flame retardant and low smoke material
- Improves assembly flexibility and aesthetics
- Quick and easy installation
- No additional cutting, stripping, crimping and punching needed
- Integral palm without lugs or terminals reduces material and assembly weight
- Conforms to NF EN 45545 obtaining an HL2 classification for chapters R22 and R23
- Small wire diameter provides maximum flexibility
- Dramatically smaller and more flexible than comparable cable based on ampacity
- Better power density than cable with lower skin effect ratio
- Reduces total installation cost
- RoHS compliant



Part Number	IBSB240-830 SCS
Article Number	558545 MTO
Typical Application Current Rating	630 A
Material	Copper Silicon/Glassfibre
Finish	Bare
Dielectric Strength	10 kV/mm
Flammability Rating	UL® 94V-0
Max Working Voltage, IEC/UL 758	1,000 VAC 1,500 VDC
Max Working Voltage, UL 67	600 VAC/DC
Working Temperature	-60 to 250 °C
Wire Diameter	0.2 mm
Certification Details	UL® 67 UL® 758
Complies With	IEC® 60439.1 IEC® 61439.1 IEC® 61439.1 Class II
Cross Section	240 mm ²
Conductor Width	32 mm
Conductor Thickness	9.2 mm
Length (L)	830 mm
A	12 mm
B	14 mm
C	39 mm
D	18.5 mm
Hole Size 1 (HS1)	10.5 mm
Hole Size 2 (HS2)	12.5 mm
Certifications	CE CSA 90005 cURus IEC 61439-1 Class II RoHS
Standard Packaging Quantity	2 pc
EAN-13	7090041500730

Maximum Ampacity Ratings									
Cross Section (mm ² /kcmil)	ΔT 30° C (A)	ΔT 40° C (A)	ΔT 45° C (A)	ΔT 50° C (A)	ΔT 55° C (A)	ΔT 60° C (A)	ΔT 70° C (A)	2 Bar Current Coefficient	3 Bar Current Coefficient
240/473.65	556	642	681	718	753	786	849	1.6	2

ΔT = Temperature of conductors – Internal temperature of panel.

Circuit Breaker Compatibility		
Circuit Breaker Current Rating		630 A
Part Number		IBSB SCS240x
Schneider Electric® Compact® (IEC)		NSX 630
ABB® Tmax® (IEC)		T5
GE® Record Plus® (IEC/UL)		FG 630
Moeller® xEnergy® (IEC)		NZM3