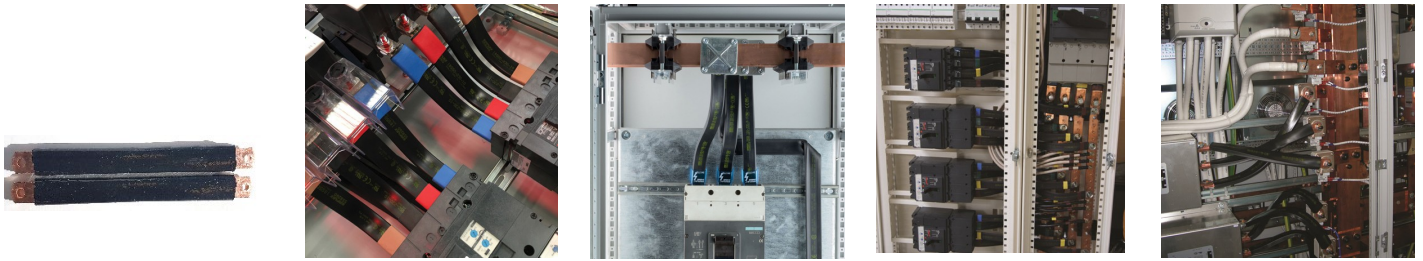


## IBSB SCS Insulated Braided Conductor, Halogen Free - IBSB240-230 SCS (558637MTO)

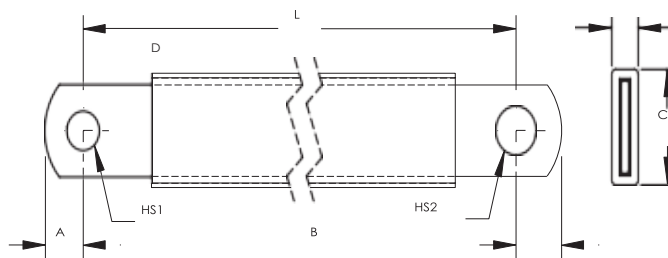


IBSB SCS Insulated Braided Conductor, Halogen Free is the ideal ready-to-install flexible wire replacement solution that is specifically designed for connections to all molded case circuit breakers, including the most compact breakers on the market. It connects to the front access terminals of the breakers without any additional accessories, such as angular connectors, spreaders, ring terminal connectors or extenders. IBSB SCS is available in cross section  $240 \text{ mm}^2$  (273.65 kcmil), lengths from 230 to 1,030 mm (9.06" to 40.55"), 700 A bare copper.

Manufactured in an ISO 9001 certified automated facility, IBSB SCS is formed by weaving high-quality electrolytic copper wire to form a durable low voltage connector with maximum flexibility which allows for more compact power connections to circuit breakers. The IBSB SCS allows users to reduce the total size and weight of the installation, improving both design flexibility and assembly aesthetics.

The unique manufacturing process of integral pre-punched palms make IBSB SCS ready to connect out of the box. There are no lugs to purchase or install, making connections simpler and faster and eliminates faulty connections due to vibration or fatigue.

- Suitable for all main molded case circuit breakers
- Resistant to vibration, improving reliability and performance
- Insulated by high-resistance, halogen free, flame retardant and low smoke material
- Improves assembly flexibility and aesthetics
- Quick and easy installation
- No additional cutting, stripping, crimping and punching needed
- Integral palm without lugs or terminals reduces material and assembly weight
- Conforms to NF EN 45545 obtaining an HL2 classification for chapters R22 and R23
- Small wire diameter provides maximum flexibility
- Dramatically smaller and more flexible than comparable cable based on ampacity
- Better power density than cable with lower skin effect ratio
- Reduces total installation cost
- RoHS compliant



|                                    |  |
|------------------------------------|--|
| Part Number                        | IBSB240-230 SCS  |
| Article Number                     | 558637 MTO   |
| Typical Application Current Rating | 630 A  |
| Material                           | Copper<br>Silicon/Glassfibre                             |
| Finish                             | Bare   |
| Dielectric Strength                | 10 kV/mm   |
| Flammability Rating                | UL® 94V-0  |
| Max Working Voltage, IEC/UL 758    | 1,000 VAC<br>1,500 VDC                                   |
| Max Working Voltage, UL 67         | 600 VAC/DC   |
| Working Temperature                | -60 to 250 °C  |
| Wire Diameter                      | 0.2 mm   |
| Certification Details              | UL® 67<br>UL® 758  |
| Complies With                      | IEC® 60439.1<br>IEC® 61439.1<br>IEC® 61439.1 Class II    |
| Cross Section                      | 240 mm <sup>2</sup>                                      |
| Conductor Width                    | 32 mm  |
| Conductor Thickness                | 9.2 mm   |
| Length (L)                         | 230 mm   |
| A                                  | 12 mm  |
| B                                  | 14 mm  |
| C                                  | 39 mm  |
| D                                  | 18.5 mm  |
| Hole Size 1 (HS1)                  | 10.5 mm  |
| Hole Size 2 (HS2)                  | 12.5 mm  |
| Certifications                     | CE<br>CSA 90005<br>cURus<br>IEC 61439-1 Class II<br>RoHS |
| Standard Packaging Quantity        | 2 pc   |
| EAN-13                             | 7090041500624  |

| Maximum Ampacity Ratings               |                      |                      |                      |                      |                      |                      |                      |                           |                           |
|--|----------------------|----------------------|----------------------|----------------------|----------------------|----------------------|----------------------|---------------------------|---------------------------|
| Cross Section (mm <sup>2</sup> /kcmil) | $\Delta T$ 30° C (A) | $\Delta T$ 40° C (A) | $\Delta T$ 45° C (A) | $\Delta T$ 50° C (A) | $\Delta T$ 55° C (A) | $\Delta T$ 60° C (A) | $\Delta T$ 70° C (A) | 2 Bar Current Coefficient | 3 Bar Current Coefficient |
| 240/473.65                             | 556                  | 642                  | 681                  | 718                  | 753                  | 786                  | 849                  | 1.6                       | 2                         |

$\Delta T$  = Temperature of conductors – Internal temperature of panel.

| Circuit Breaker Compatibility      |  |              |
|------------------------------------|--|--------------|
| Circuit Breaker Current Rating     |  | 630 A        |
| Part Number                        |  | IBSB SCS240x |
| Schneider Electric® Compact® (IEC) |  | NSX 630      |
| ABB® Tmax® (IEC)                   |  | T5           |
| GE® Record Plus® (IEC/UL)          |  | FG 630       |
| Moeller® xEnergy® (IEC)            |  | NZM3         |