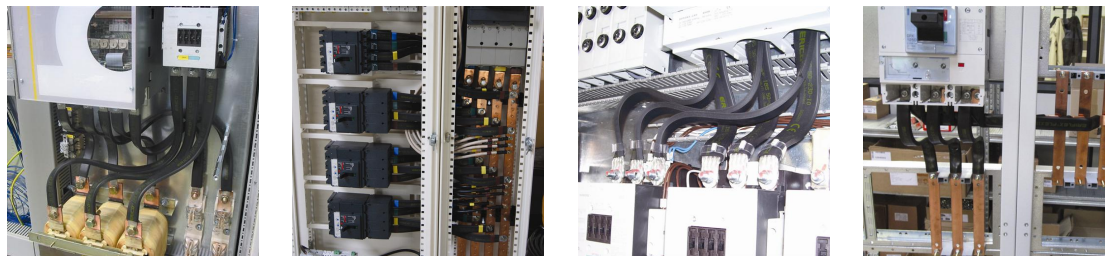


IBS Flat Insulated Braided Conductor – IBS50-1030-10 (558256)

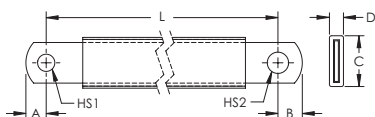


IBS Flat Insulated Braided Conductors are the ideal ready-to-install flexible wire replacement solution. They connect directly to the front access terminals of an electrical device without the need for additional accessories, such as angular connectors, spreaders, ring terminal connectors or extenders. IBS Flat Insulated Braided Conductors are available in cross section of 25 and 50 mm² (49.34 and 98.68 kcmil), lengths from 230 to 1,030 mm (9.06" to 40.55"), and amperages ranging from 177 to 274 A.

Manufactured in an ISO 9001 certified proprietary automated facility, IBS Flat Insulated Braided Conductors are formed by weaving high-quality electrolytic copper wire to form a durable low voltage connector with maximum flexibility that allows for more compact power to electrical device. The IBS Flat Insulated Braided Conductor allows users to reduce the total size and weight of the installation, improving both design flexibility and assembly aesthetics.

The IBS Flat Insulated Braided Conductor features integral pre-punched palms that are ready to connect out of the box. There are no lugs to purchase or install, making connections simpler and faster and eliminating faulty connections due to vibration or fatigue. The insulation is a high-resistance self-extinguishing PVC.

- Suitable for all main electrical devices
- Resistant to vibration, improving reliability and performance
- Improves assembly flexibility and aesthetics
- Quick and easy installation
- No additional cutting, stripping, crimping and punching needed
- Integral palm without lugs or terminals reduces material and assembly weight
- Small wire diameter provides maximum flexibility
- RoHS compliant



Part Number	IBS50-1030-10
Article Number	558256
Finish	Tinned
Typical Application Current Rating	250 A
Material	Copper Polyvinylchloride
Dielectric Strength	20 kV/mm
Flammability Rating	UL [®] 94V-0
Max Working Voltage, IEC/UL 758	1,000 VAC 1,500 VDC
Max Working Voltage, UL 67	600 VAC/DC
Working Temperature	105 °C Max

Part Number	IBS50-1030-10
Operating Temperature	-50 to 105 °C
Wire Diameter	0.15 mm
Complies With	IEC® 60439.1 IEC® 61439.1 IEC® 61439.1 Class II
Cross Section	50 mm ²
Conductor Width	20 mm
Conductor Thickness	3.8 mm
Length [L]	1,030 mm
A	12 mm
B	12 mm
C	25 mm
D	7.5 mm
Hole Size 1 (HS1)	10.5 mm
Hole Size 2 (HS2)	10.5 mm
Unit Weight	0.65 kg
Certifications	ABS 13-HS1070074-PDA CE CSA 90005 cURus EAC 0234251 (Russian Federation) IEC 61439-1 Class II IBS-IBSB-IBSBR IEC 61439-1 IBS-IBSB-IBSBR RoHS
Standard Packaging Quantity	10 pc
UPC	78285687715
EAN-13	3479775582566

Maximum Ampacity Ratings									
Cross Section (mm ² /kcmil)	ΔT 30° C (A)	ΔT 40° C (A)	ΔT 45° C (A)	ΔT 50° C (A)	ΔT 55° C (A)	ΔT 60° C (A)	ΔT 70° C (A)	2 Bar Current Coefficient	3 Bar Current Coefficient
25/49.34	137	158	167	177	185	193	209	1.6	2
50/98.68	213	246	260	274	288	301	325	1.6	2

Circuit Breaker Compatibility		
Circuit Breaker Current Rating	125/160 A	250 A
Part Number	IBS25x	IBS50x
Schneider Electric® Compact® (IEC)	NSX 100 NSX 160	NSX 250
Square D® PowerPact® (UL)	J-Frame	J-Frame
ABB® Tmax® (IEC)	-	T3 XT3 XT4
ABB® Tmax® (UL)	T3	T4
GE® Record Plus® (IEC/UL)	FE 160	FE 250
Siemens® Sentron® (IEC/UL)	-	VL250 3VL3
Moeller® xEnergy® (IEC)	-	NZM2

Circuit Breaker Compatibility		
Circuit Breaker Current Rating	125/160 A	250 A
Part Number	IBS25x	IBS50x
Cutler Hammer® Series G (UL)	JG Frame	JG Frame
Legrand® (IEC)	-	DPX 250 DPX3 250
Hager® (IEC)	-	h3 250

ΔT = Temperature of conductors – Internal temperature of panel.

This table indicates the temperature rise produced by chosen current in the given section. This calculation does not take into account the heat dissipation from the switch gear.

ABB is a registered trademark of ABB Asea Brown Boveri Ltd. ABS is a registered certification mark of American Bureau of Shipping. CSA, CSA-US and C-CSA-US are registered trademarks of Canadian Standards Association. GE and Record Plus are registered trademarks of General Electric Company. Hager is a registered trademark of the Hager Group. IEC is a registered trademark of the International Electrotechnical Commission. Legrand is a registered trademark of Legrand North America, Inc. Moeller, xEnergy, and Cutler Hammer are registered trademarks of Eaton Corporation. Schneider Electric and Compact are registered trademarks of Schneider Electric SA. Siemens and Sentron are registered trademarks of Siemens Aktiengesellschaft. Square D and PowerPact are registered trademarks of SNA Holdings Inc. Tmax is a registered trademark of ABB SACE Spa. UL, UR, cUL, cUR, cULus and cURus are registered certification marks of UL LLC.

WARNING

Pentair products shall be installed and used only as indicated in Pentair's product instruction sheets and training materials. Instruction sheets are available at erico.pentair.com and from your Pentair customer service representative. Improper installation, misuse, misapplication or other failure to completely follow Pentair's instructions and warnings may cause product malfunction, property damage, serious bodily injury and death and/or void your warranty.

© 2016 Pentair All rights reserved

Pentair, CADDY, CADWELD, CRITEC, ERICO, ERIFLEX, ERITECH and LENTON are owned by Pentair or its global affiliates.

All other trademarks are the property of their respective owners. Pentair reserves the right to change specifications without prior notice.